

CLERK'S OFFICE
APPROVED
Date: 1-20-09

Submitted by: Chairman of the Assembly
at the request of the
School Board
Prepared by: Anchorage School District
For Reading: January 20, 2009

ANCHORAGE, ALASKA
AR NO. 2009-1

A RESOLUTION OF THE ANCHORAGE MUNICIPAL ASSEMBLY APPROVING
THE REVISED (SCHEMATIC) DESIGN FOR THE SAND LAKE ELEMENTARY
SCHOOL RENEWAL

WHEREAS, Alaska Statute 14.14.060(e) provides that the Assembly approve the preliminary design and subsequent and revised designs approved by the School Board for design of school facilities, and

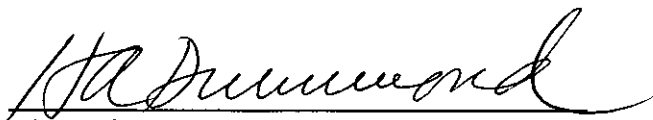
WHEREAS, the School Board has approved the revised design, consisting of a schematic plans and elevations, for the Sand Lake Elementary School Renewal Project.

NOW, THEREFORE, the Anchorage Assembly resolves:


Section 1. The Assembly hereby approves the revised (schematic) design for Sand Lake Elementary School Renewal Project.

Section 2. This resolution shall become effective immediately upon its passage and approval by the Anchorage Assembly.

PASSED AND APPROVED by the Anchorage Assembly this 20th day of
January, 2009.


Chair of the Assembly

ATTEST


Municipal Clerk

ANCHORAGE SCHOOL DISTRICT
ANCHORAGE, ALASKA

AM 1-2009

MEMORANDUM

January 20, 2009

TO: THE HONORABLE MATT CLAMAN
ANCHORAGE ASSEMBLY

FROM: OFFICE OF THE SUPERINTENDENT

SUBJECT: APPROVAL OF THE REVISED (SCHEMATIC) DESIGN FOR THE
SAND LAKE ELEMENTARY SCHOOL RENEWAL PROJECT

In accordance with AO NO. 2000-106(S), this memorandum provides information required for submission and approval of the revised (schematic) design for Sand Lake Elementary School Renewal Project. This required information includes a description of the proposed school site, school building and building program; the projected student population; the total construction budget and the funding source; the projected project schedule; and any known neighborhood impacts, comments, reactions, which reflect potential impacts of the school building on the neighboring community. The following is in response to these requirements:

Sand Lake Elementary School is located in southwest Anchorage at 7500 Jewel Lake Road. It occupies a 9.23-acre site with residential housing and a church on the north and south sides respectively, municipal park land on the west side, and vehicular access limited to Jewel Lake Road on the east side. Originally built in 1958, the facility has had additions in 1959, 1964 and 1987, bringing it up to its current 24 classrooms. A gymnasium and a music classroom were added in 1987. There are five relocatable classrooms on the site.

Sand Lake Elementary School provides both a regular educational program and a Japanese immersion program for kindergarten through 6th grade. The September 3, 2008 enrollment was 674 students, which is 131% of the facility's program capacity. Although recent influx of students from rural areas has markedly increased enrollment, six-year projections show enrollments will continue to remain relatively the same.

The Preliminary (Conceptual) Design for the Sand Lake Elementary School Renewal project was approved by the School Board on October 13, 2008, and by the Assembly on October 28, 2008 (AR NO. 2008-250). The approved preliminary design consists of a standard 26-classroom school which reuses as much of the existing facility as economically possible and replaces other areas requiring demolition.

The proposed Revised (Schematic) Design largely conforms to approved Supplemental Educational Specifications. Floor area has increased from 62,500 to 62,908 square feet. This area increase is needed to provide adequate work space for a larger staff, additional Japanese immersion program storage, and additional privacy and confidentiality requirements in the Nurse's area due to regulatory changes.

1
2 Through cooperative involvement of the GC/CM, Davis Constructors & Engineers, Inc.,
3 and the design team, Nvision Inc., the current project's estimated construction cost is
4 within the \$16.3 million budget, approved by Anchorage voters in the April 2008 bond
5 election. Project construction is anticipated to begin in 2009 and completed by the end of
6 2010.
7

8 A Building Design Committee comprised of school staff, community, and parents has had
9 many meetings to develop the present design. In addition, the Sand Lake Community
10 Council has been kept abreast of the design development; the latest update was on
11 January 12, 2009. Following the recommendation of the Municipal Planning
12 Department, the District is in the process of initiating a property plat and applying for a
13 section line easement vacation.
14

15 Attached is a set of revised design drawings.
16
17
18

AR-2009-1

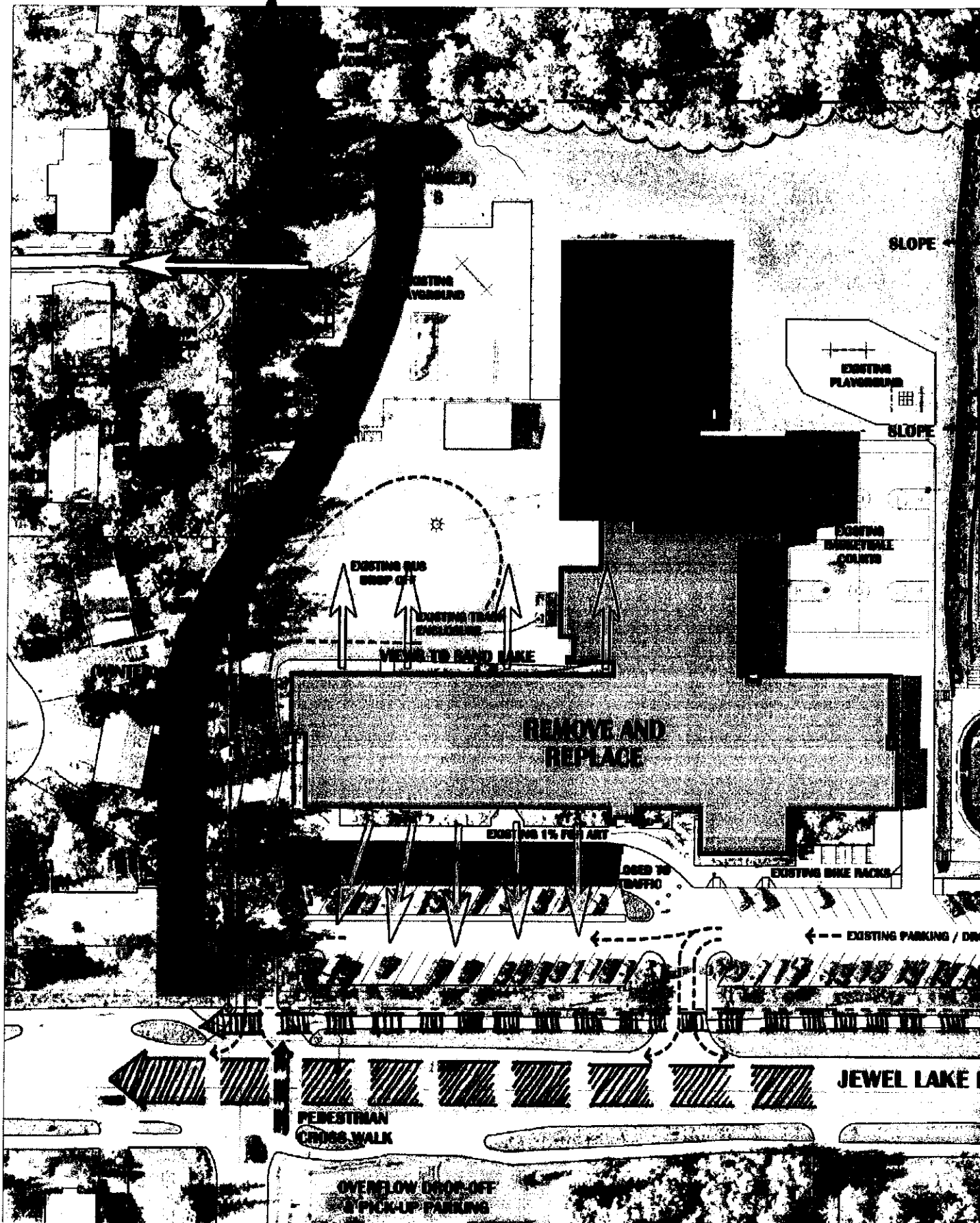
Municipality of Anchorage
MUNICIPAL CLERK'S OFFICE
Agenda Document Control Sheet

AR 2009-1

(SEE REVERSE SIDE FOR FURTHER INFORMATION)

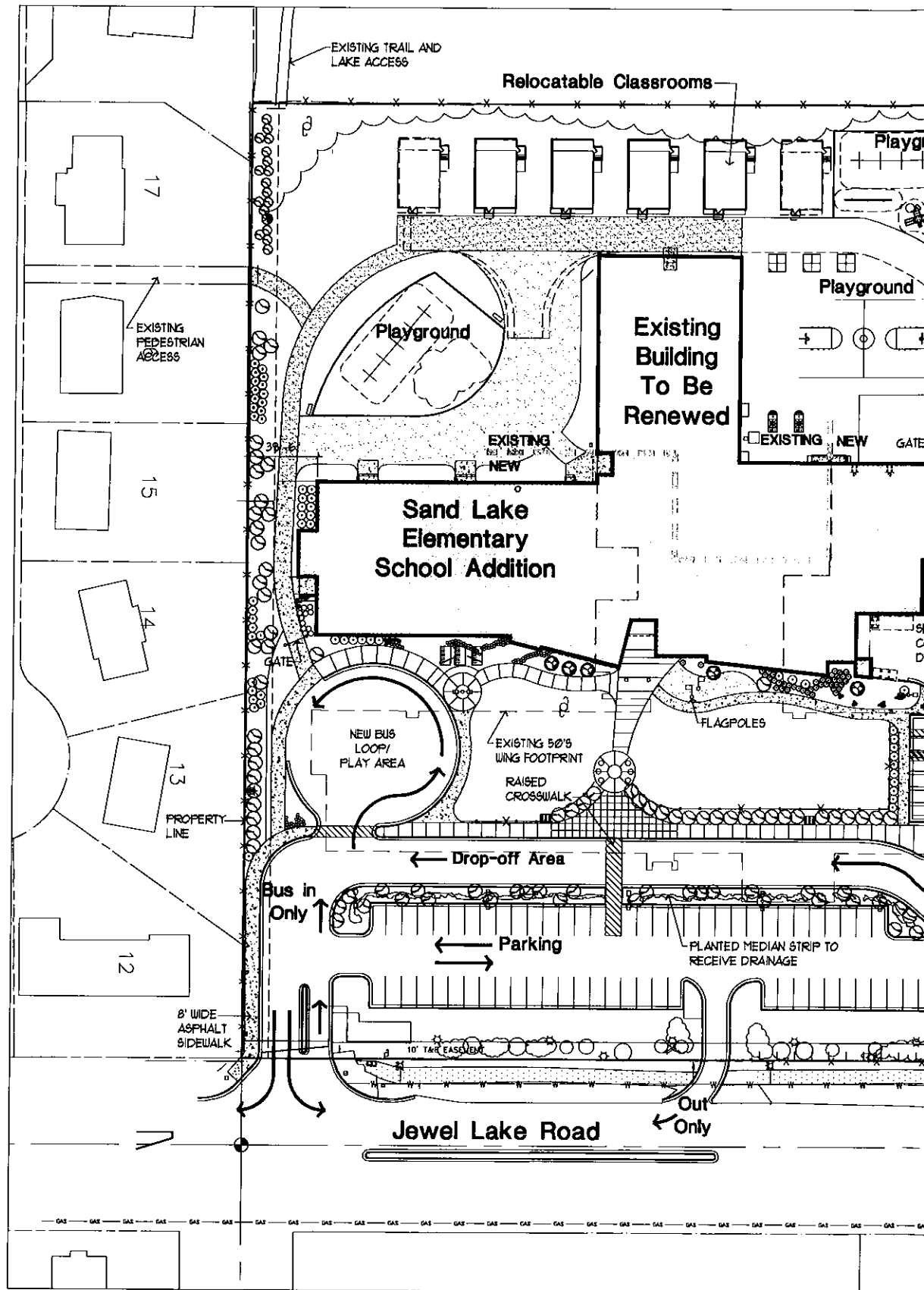
1	SUBJECT OF AGENDA DOCUMENT	DATE PREPARED
	ANCHORAGE SCHOOL DISTRICT	
	APPROVAL OF THE REVISED (SCHEMATIC) DESIGN	01/13/2009
	FOR THE SAND LAKE ELEMENTARY SCHOOL	Indicate Documents Attached
	RENEWAL PROJECT	
	AM 1-2009	AO <input type="checkbox"/> AR <input checked="" type="checkbox"/> AM <input checked="" type="checkbox"/> AIM <input type="checkbox"/>
2	DEPARTMENT NAME	DIRECTOR'S NAME
	ASD FACILITIES DEPARTMENT	RAY AMSDEN
3	THE PERSON THE DOCUMENT WAS ACTUALLY PREPARED BY	HIS/HER PHONE NUMBER
	RAY AMSDEN	348-5156
4	COORDINATED WITH AND REVIEWED BY	INITIALS
	Mayor	
	Municipal Clerk	
	Municipal Attorney	
	Employee Relations	
	Municipal Manager	
	Cultural & Recreational Services	
	Fire	
	Health & Human Services	
	Merrill Field Airport	
	Municipal Light & Power	
	Office of Management and Budget	
	Police	
	Port of Anchorage	
	Public Works	
	Solid Waste Services	
	Transit	
	Water & Wastewater Utility	
	Executive Manager	
	Community Planning & Development	
	Finance, Chief Fiscal Officer	
	Heritage Land Bank	
	Management Information Services	
	Property & Facility Management	
	Purchasing	
	Other	
	Carol Comeau, Superintendent, ASD <i>Carol Comeau</i>	
	George Vakalis, Asst. Superintendent, Support Services <i>George Vakalis</i>	
5	Special Instructions/Comments	
6	ASSEMBLY HEARING DATE REQUESTED	7
	01/20/2009	PUBLIC HEARING DATE REQUESTED





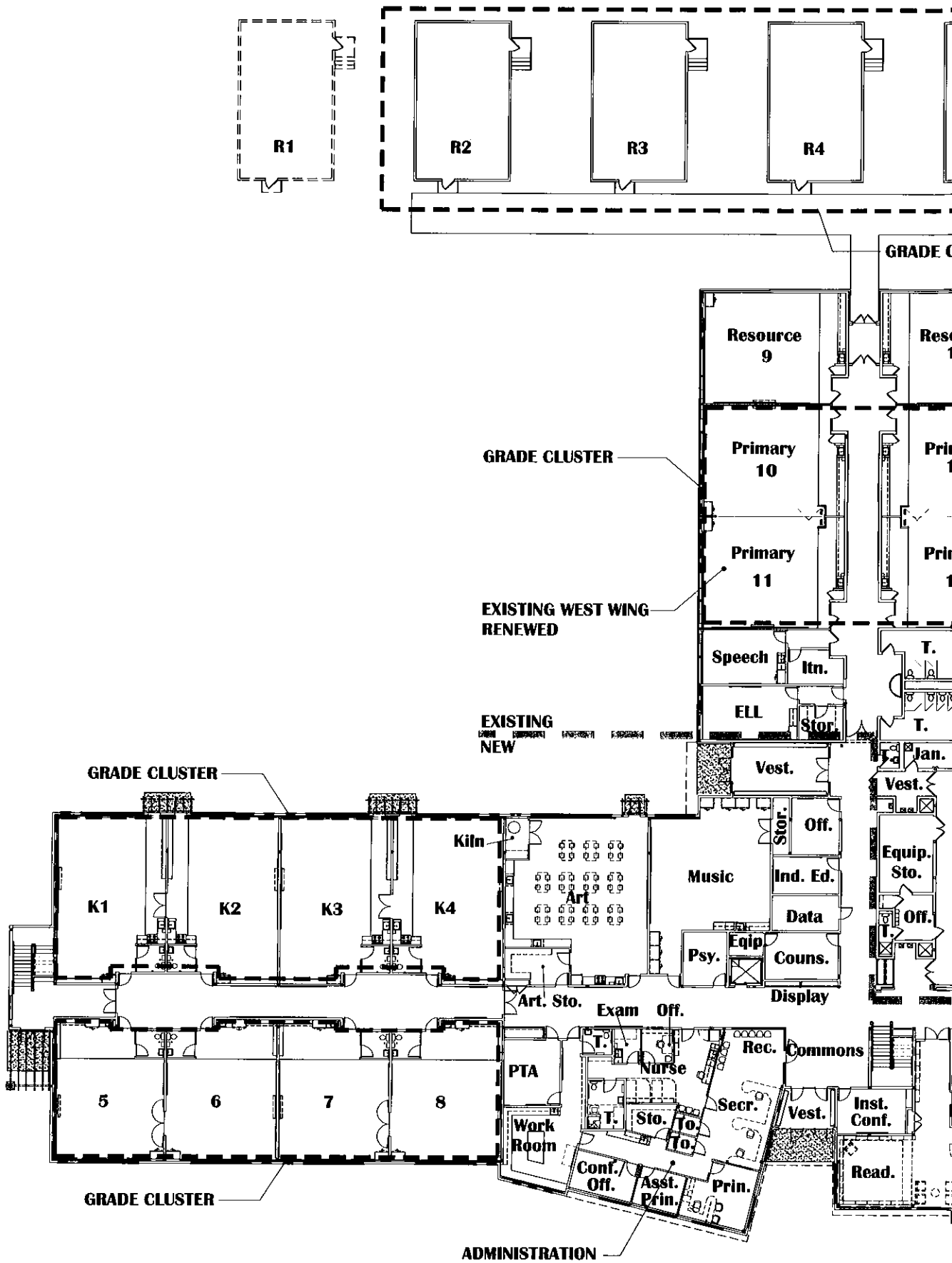
EXISTING SITE PLAN &

SCALE: NTS



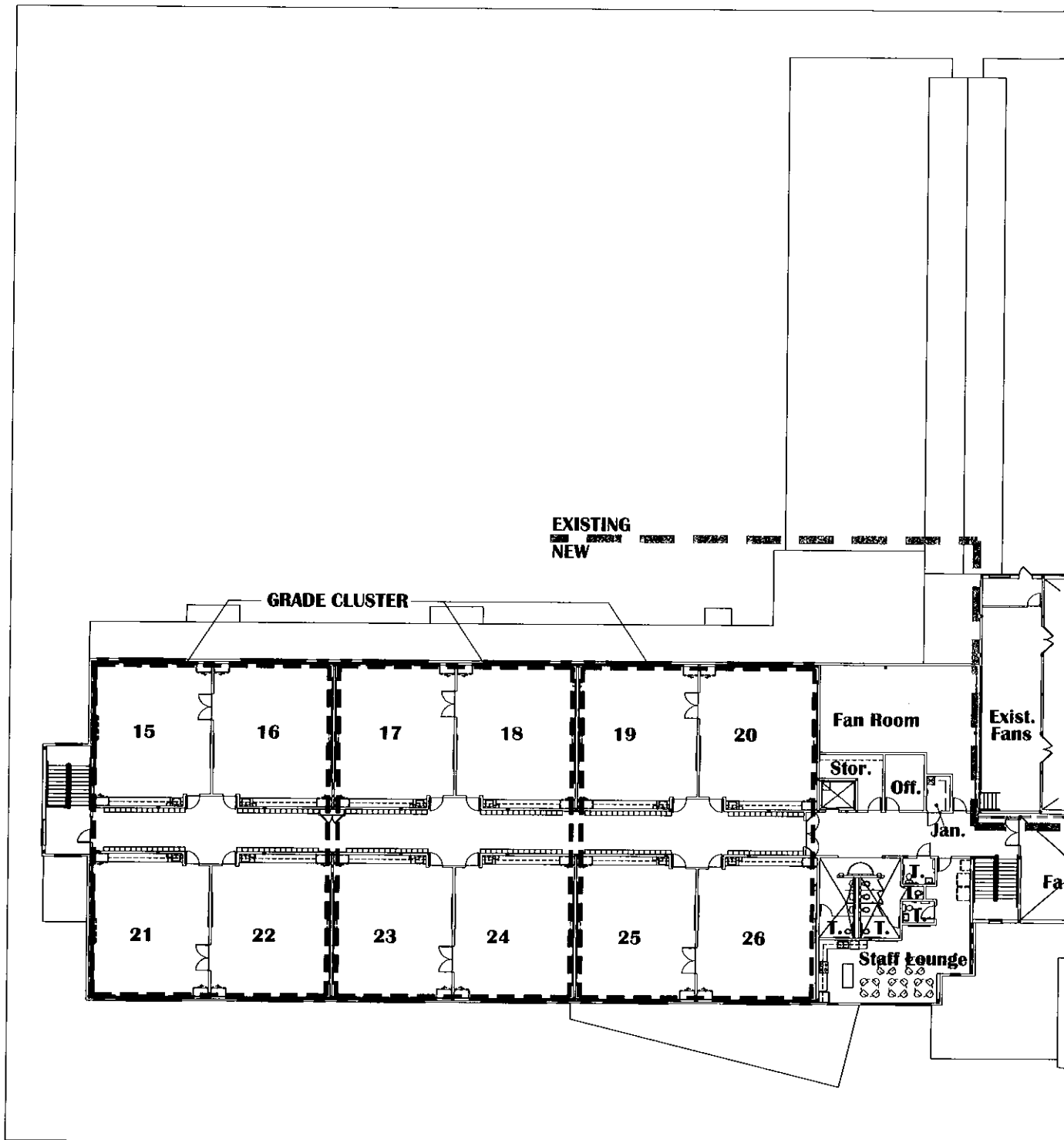
SCHEMATIC SITE PLAN

SCALE: 1" = 40'-0"



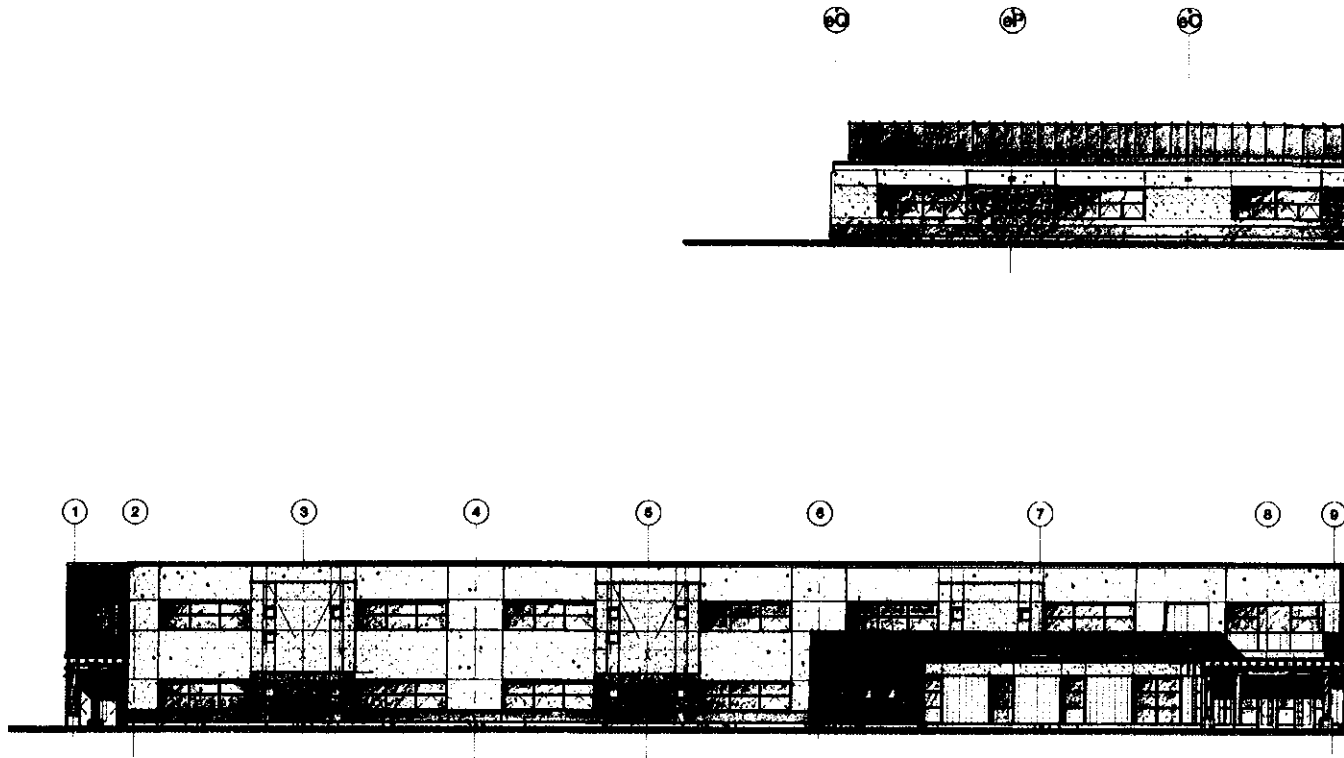
SCHEMATIC FIRST FLOOR

SCALE: 1/16" = 1'-0"



SCHEMATIC SECOND FLOOR

SCALE: 1/16" = 1'-0"



SCHEMATIC EXTERIOR

SCALE: NTS

SPACE SUMMARY
Supplemental Ed Spec

ATTACHMENT B
Sand Lake Elementary School
Nvision Architecture - December 23, 2008

	Exist. Sand Lake	Ed Spec - 26 CR	Approved Suppl. Ed. Spec - 26 CR	Proposed Design- 26 CR	Remarks
PROGRAM SPACES	SQ FT	SQ FT	SQ FT	SQ FT	
Administrative Support					
Reception	84	150	150	150	
Secretarial (Includes Secure Closet)	417	420	420	443	
Student Timeout		40	40	32	
Student Timeout			40	31	
Conference	176	225	225	167	
Principal's Office	147	250	250	249	
PTA/Community Schools	163	250	250	245	
Nurse Room (including restroom)	487	335	550	636	Program delivery increase
Principal Intern		90	150	123	
Subtotal Administration	1,474	1,760	2,075	2,076	
Staff Support Services					
Staff Lounge including restrooms	762	725	725	710	
Staff Rest Room			50	55	
Staff Rest Room			50	51	
Staff Rest Room			50	40	
Production and Storage (Workroom)	214	365	365	478	Increased due to number of Teachers
Subtotal Staff Support	976	1,090	1,240	1,334	
Student Support Services					
Counseling Office		250	150	229	
Indian Education	100	300	150	166	
Psychology Office		100	120	182	
Itinerant Office		100	120	127	
Itinerant Office (Speech)		100	120	124	
English Language Learners (Bilingual Ed)	432	150	400	355	
Subtotal Student Support	532	1,000	1,060	1,183	
Classroom Instruction					
Kindergarten w/ toilet	4,291	1,250	1,200	1,111	
Kindergarten w/ toilet		1,250	1,200	1,148	
Kindergarten w/ toilet		1,250	1,200	1,148	
Kindergarten w/ toilet		1,250	1,200	1,159	
Primary Classroom - 1st Gr. - w/ toilet	9,093	1,000	975	965	
Primary Classroom - 1st Gr. - w/ toilet		1,000	975	966	
Primary Classroom - 1st Gr. - w/ toilet		1,000	975	966	
Primary Classroom - 1st Gr. - w/ toilet		1,000	975	966	
Primary Classroom - 2nd Gr.		1,000	975	975	
Primary Classroom - 2nd Gr.		1,000	975	975	
Primary Classroom - 2nd Gr.		1,000	975	975	
Primary Classroom - 2nd Gr.		1,000	975	975	
Primary Classroom - 3rd Gr.		1,000	950	920	Lockers in the hallway
Primary Classroom - 3rd Gr.		1,000	950	910	Lockers in the hallway
Primary Classroom - 3rd Gr.	9,425	1,000	950	927	Intermediate to Primary, Lockers in the hallway
Primary Classroom - 3rd Gr.		1,000	950	927	Intermediate to Primary, Lockers in the hallway
Intermediate Classroom - 4th Gr.		1,000	950	927	Lockers in the hallway
Intermediate Classroom - 4th Gr.		1,000	950	927	Lockers in the hallway
Intermediate Classroom - 4th Gr.		1,000	950	927	Lockers in the hallway
Intermediate Classroom - 4th Gr.		1,000	950	927	Lockers in the hallway
Intermediate Classroom - 5th Gr.		1,000	950	927	Lockers in the hallway
Intermediate Classroom - 5th Gr.		1,000	950	927	Lockers in the hallway
Intermediate Classroom - 5th Gr.		1,000	950	927	Lockers in the hallway
Intermediate Classroom - 5th Gr.		1,000	950	919	Lockers in the hallway
Lockers & Hallway Breakout Areas			1,000	0	Area included in corridor sq ft.
Instructional Support Conference		165	165	215	
Art Activity Lab (includes lab & storage)	973	1,500	1,500	1,492	
Subtotal Classroom Instruction	23,782	26,665	26,665	25,128	
IMC					
Teaching Stations (2) and Stacks	2,520	2,465	2,465	2,609	
Technology Lab	364	750	750	754	
Library Office/Workroom	366	150	150	180	
AV & Periodical Storage		225	225	250	
Computer Equipment Room		150	150	156	
Subtotal IMC	3,250	3,740	3,740	3,949	